

DIN 444 B sim. UNI 6058

Tiranti ad occhio.

Eye bolts

Disponibile/Available :

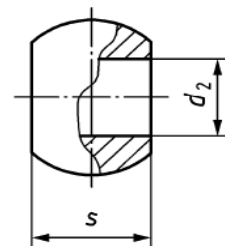
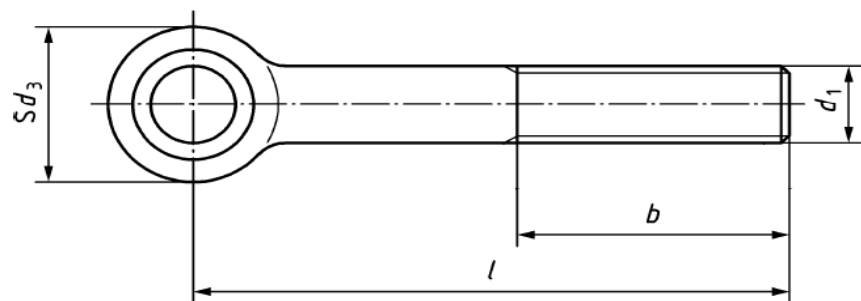


table 1

Thread size d_1	M6	M8	M10	M12	M16	M20	M24
P^*	1	1,25	1,5	1,75	2	2,5	3
b^{+2P}	$l \leq 125$ mm	18	22	26	30	38	54
	$125 \text{ mm} < l \leq 200$ mm	—	28	32	36	44	60
	$l > 200$ mm	—	—	—	49	57	73
d_2	nom. = min.	6	8	10	12	16	22
	max.	6,030	8,036	10,036	12,043	16,043	22,052
Sd_3	max.	14	18	20	25	32	45
	min.	13,57	17,57	19,48	24,48	31,38	44,38
S	max.	7	9	12	14	17	25
	min.	6,85	8,85	11,82	13,82	16,82	24,79

* P è il passo del filetto/* P is the pitch of the thread.

table 2

Thread size d_1	M6	M8	M10	M12	M16	M20	M24
distance, $l - b$	14	16	18	23	27	32	40

I tiranti ad occhio con "l" sopra la linea tratteggiata, sono filettati fin quasi alla testa con distanza "l-b" come da tabella 2

Eye bolts with "l" above the stepped dashed line are threaded nearly to the head with distance "l-b" according to table 2

/	max.	min.	M6	M8	M10	M12	M16	M20	M24
20	19,35	20,65	6x20	8x20					
25	24,35	25,65	6x25	8x25					
30	29,35	30,65							
35	34,2	35,8	6x35						
40	39,2	40,8	6x40	8x40					
45	44,2	45,8	6x45	8x45	10x45				
50	49,2	50,8	6x50	8x50	10x50				
55	54,05	55,95	6x55	8x55	10x55	12x55			
60	59,05	60,95	6x60	8x60	10x60	12x60			
65	64,05	65,95	6x65	8x65	10x65	12x65			
70	69,05	70,95	6x70	8x70	10x70	12x70	16x70	20x70	
75	74,05	75,95	6x75	8x75	10x75	12x75	16x75	20x75	
80	79,05	80,95	6x80	8x80	10x80	12x80	16x80	20x80	24x80
90	88,9	91,1	6x90	8x90	10x90	12x90	16x90	20x90	24x90
100	98,9	101,1		8x100	10x100	12x100	16x100	20x100	24x100
110	108,9	111,1		8x110	10x110	12x110	16x110	20x110	24x110
120	118,9	121,1		8x120	10x120	12x120	16x120	20x120	24x120
130	128,75	131,25		8x130	10x130	12x130	16x130	20x130	24x130
140	138,75	141,25		8x140	10x140	12x140	16x140	20x140	24x140
150	148,75	151,25			10x150	12x150	16x150	20x150	24x150
160	158,75	161,25				12x160	16x160	20x160	24x160
180	178,75	181,25				12x180	16x180	20x180	24x180
200	198,55	201,45				12x200	16x200	20x200	24x200
220	218,55	221,45				12x220	16x220	20x220	24x220
240	238,55	241,45				12x240	16x240	20x240	24x240
260	258,4	261,6				12x260	16x260	20x260	24x260
280	278,4	281,6						20x280	
300	298,4	301,6						20x300	